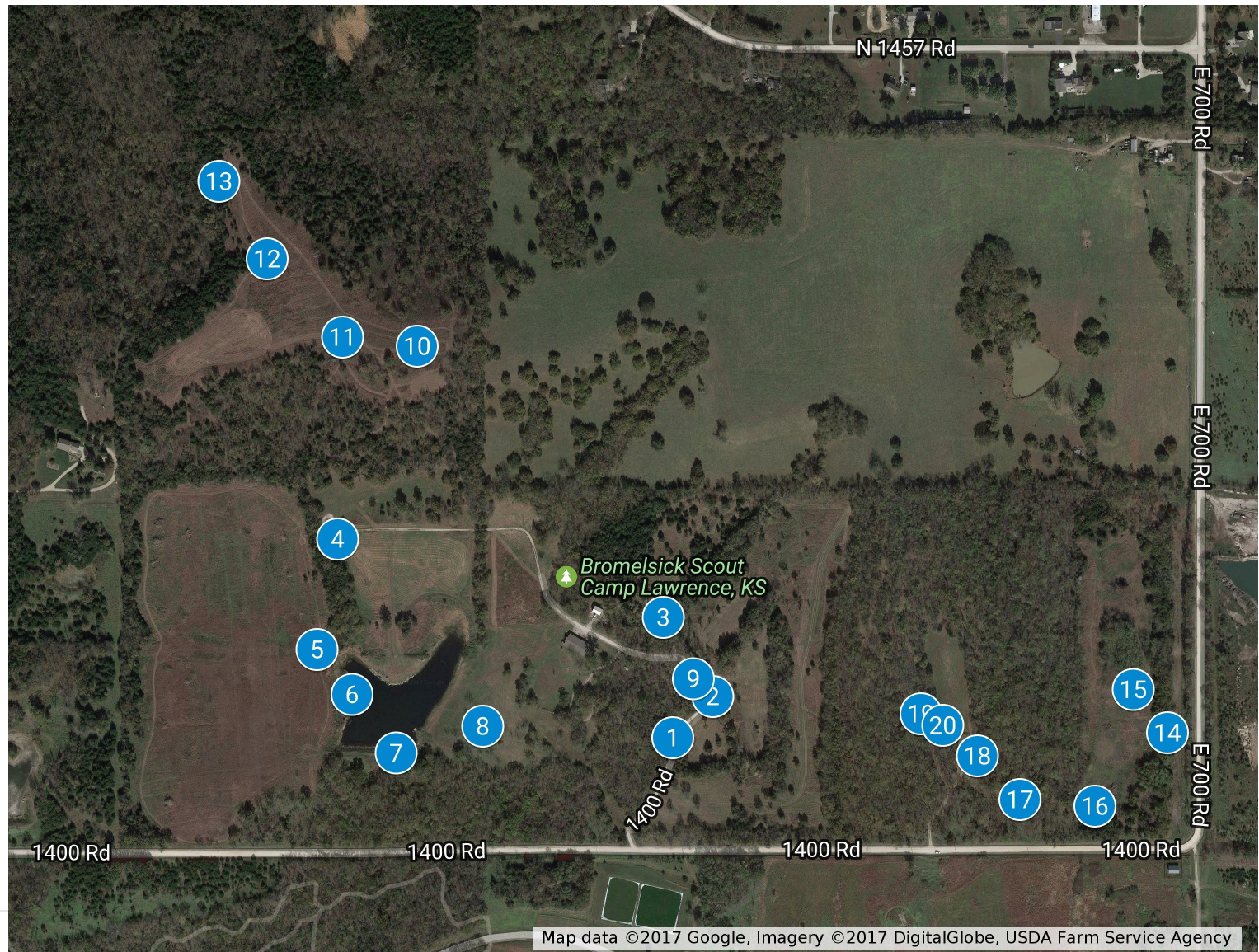


Bromelsick GPS Plant Trail

Camp Bromelsick GPS Plant Trail

- 1 Red Mulberry
- 2 Persimmon
- 3 Cottonwood
- 4 Eastern Grammagrass
- 5 Little Bluestem
- 6 Sandbar Willow
- 7 White Sage
- 8 Kentucky Coffee Tree
- 9 Missouri gooseberry
- 10 Indiangrass
- 11 Switchgrass
- 12 Black Cherry
- 13 Honey Locust
- 14 Black Locust
- 15 American Elm
- 16 Red Cedar
- 17 Buckbrush
- 18 Osage-orange
- 19 Poison Ivy
- 20 Black Walnut



Bromelsick GPS Plant Trail

Number	Common Name	Scientific name	Latitude	Longitude
1	Red Mulberry	Morus rubra	38.9435301	-95.3793095
2	Persimmon	Diospyros virginiana	38.9439478	-95.3787900
3	Cottonwood	Populus deltoides	38.9447474	-95.3794338
4	Eastern Grammagrass	Tripsacum dactyloides	38.9455423	-95.3836716
5	Little Bluestem	Schizachyrium scoparium	38.9444234	-95.3839366
6	Sandbar Willow	Salix interior	38.9439710	-95.3834850
7	White Sage	Artemisia ludoviciana	38.9433750	-95.3829105
8	Kentucky Coffee Tree	Gymnocladus dioicus	38.9436490	-95.3817830
9	Missouri gooseberry	Ribes missouriense	38.9441260	-95.3790440
10	Indiangrass	Sorghastrum nutans	38.9474950	-95.3826370
11	Switchgrass	Panicum virgatum	38.9475860	-95.3836060
12	Black Cherry	Prunus serotina	38.9483780	-95.3845891
13	Honey Locust	Gleditsia triacanthos	38.9491620	-95.3852160
14	Black Locust	Robinia pseudoacacia	38.9435810	-95.3728710
15	American Elm	Ulmus americana	38.9440211	-95.3733160
16	Red Cedar	Juniperus virginiana	38.9428390	-95.3738147
17	Buckbrush	Symphoricarpos orbiculatus	38.9429050	-95.3747940
18	Osage-orange	Maclura pomifera	38.9433472	-95.3753471
19	Poison Ivy	Toxicodendron radicans	38.9437715	-95.3760814
20	Black Walnut	Juglans nigra	38.9436565	-95.3757955